

CITY OF CHESTERMERE

PROVINCE OF ALBERTA

BYLAW 022-16

A Bylaw of the City of Chestermere, in the Province of Alberta, to amend the Kinniburgh North Outline Plan (Bylaw 2006-600/2) and the Land Use Bylaw 022-10, as amended.

WHEREAS The Municipal Government Act, RSA 2000, C. M-26 and amendments thereto provides that a Municipal Council may adopt an Area Structure Plan and must pass a Land Use Bylaw;

AND WHEREAS Council deems it desirable to amend both Bylaw 2006-600/2 and Bylaw 022-10 to allow the development of a Ptn. of Lot 1 and 2, Block 13, Plan 1014889;

NOW THEREFORE, The Council of the City of Chestermere, duly assembled, enacts as follows:

1. That Schedule "A – Land Use District Map" of the Land Use Bylaw 022-10 be amended by redesignating a Ptn. of Lot 1 and 2, Block 13, Plan 1014889 from Residential Estate Modified (R-1EM) to Direct Control Residential Estate Modified (DC(R-1EM), Residential Single Detached (R-1), and Municipal Reserve as shown on attached Schedule 'A' attached to and forming part of this Bylaw.
2. This Bylaw comes into full force and takes effect on the date of third and final reading.

READ A FIRST TIME this 6 day of September, 2016.

READ A SECOND TIME this 4 day of July, 2017.

READ A THIRD TIME this 4 day of July, 2017.

Resolution Numbers –

341-16

272-17

273-17

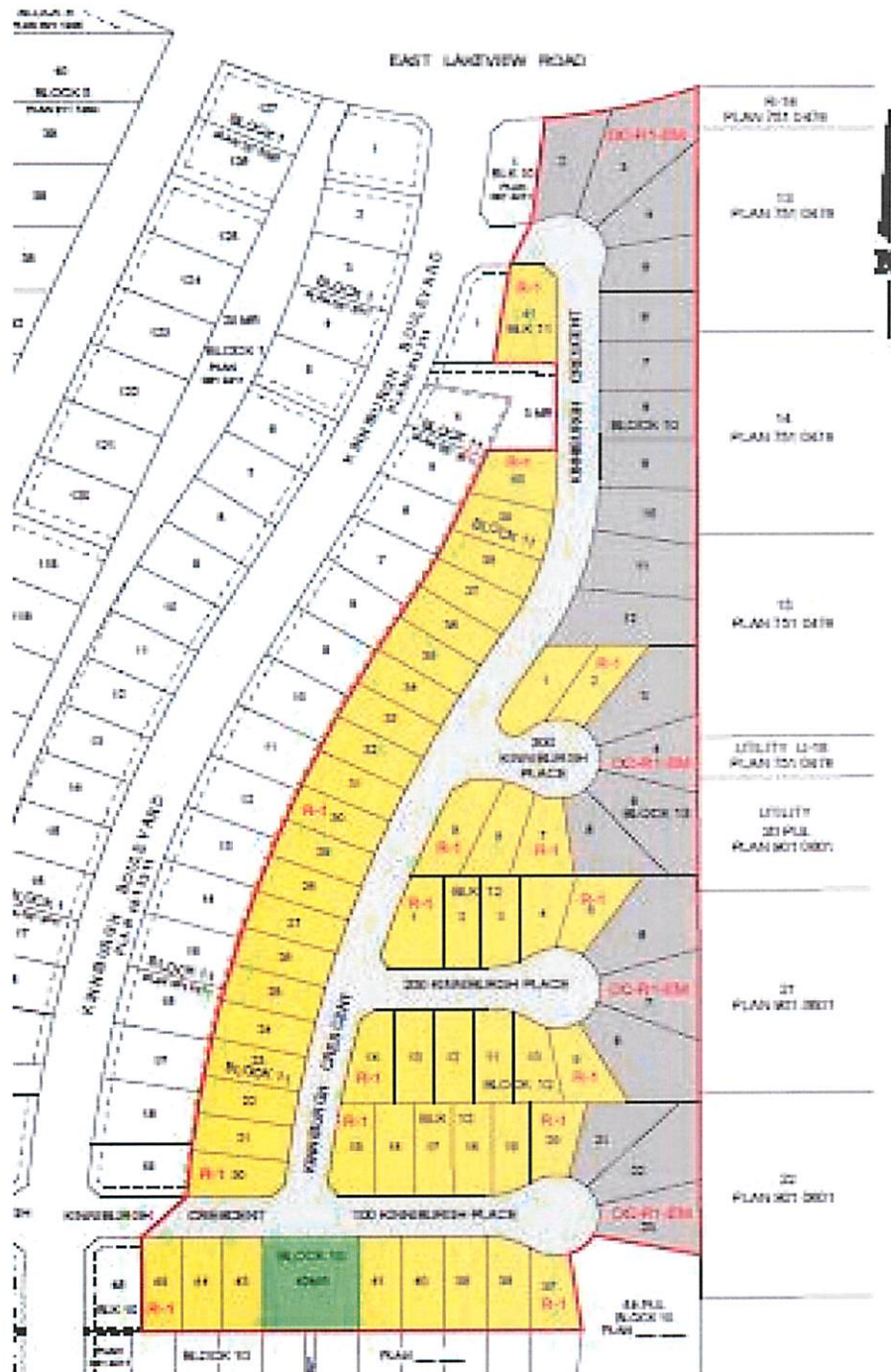


MAYOR



Interim CAO

CITY OF CHESTERMERE



BYLAW 022-16 LAND USE BYLAW AMENDMENT Schedule "A"