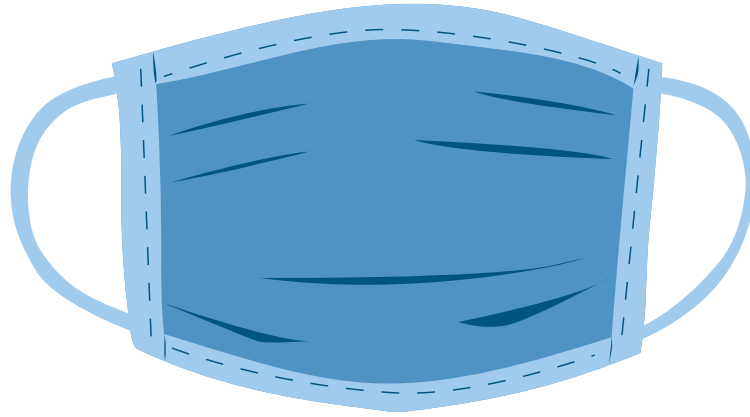


# MASK OR FACE COVERING REQUIRED



## **CHESTERMERE MANDATORY MASK BYLAW #043-20 IN EFFECT**

**Residents and visitors must wear a face covering at all times while in an indoor public space, public workplace, or public vehicle where other people are present.**

Exemptions include persons under the age of 2, those who cannot use a face covering without assistance, those who are unable to wear a face covering due to a mental or physical concern or limitation, those who are consuming food or drink in designated seating areas or as part of religious or spiritual ceremony, those engaged in water activities or physical exercise, those providing care to a person with a disability where a face covering would hinder that caregiving or assistance, and persons engaging in services that require the temporary removal of a face covering. The Mandatory Mask Bylaw will remain active while Chestermere is under the Provincial 'Enhanced' Status.

**Anyone found to be contravening the Bylaw will be subject to a \$100 fine.**

**HELP PREVENT THE SPREAD**

For more information on the City of Chestermere Temporary Mandatory Mask Bylaw #043-20, visit [chestermere.ca/covid19](https://chestermere.ca/covid19)



**CHESTERMERE**